



Centre de recherche sur les politiques en matière d'invalidité professionnelle (CRPIP)
Centre for Research on Work Disability Policy (CRWDP)

Centre for Research on Work Disability Policy

Mission, Structure and Key Activities

Emile Tompa
Senior Scientist, IWH
Associate Professor,
McMaster University
Co-director, CRWDP

Ellen MacEachen
Associate Professor,
University of Waterloo
Senior Scientist, IWH
Co-director, CRWDP





Centre de recherche sur les politiques en matière d'invalidité professionnelle (CRPIP)
Centre for Research on Work Disability Policy (CRWDP)

Activating Research through Seed Grants Academic-Partner Collaborations

Seed Grant Projects

First call : spring/summer 2014 (7 awarded)

Second call: spring/summer 2015 (6 awarded)

The Human Rights of
Injured Workers: Social
Protection Floors and the
Canadian Work Disability
System

Developing research
capacity to better
understand the
effects of British
Columbia's
Annualized Earnings
Exemption in
relation to people
living with mental
illness and/or
addictions who are
working and
receiving disability
assistance

Exploring the Experiences
of Injured Workers Who
Fail to Return to Work

La mesure de
l'incapacité : un état
des lieux

Willing but Unable:
A Population in Waiting

People with Episodic
Disabilities: Who are They and
What Supports Do They Need
to Obtain and Retain
Employment?

Disability Support Services in
Newfoundland and Labrador
and Canada: Impact on Labour
Market Participation for
Individuals with Disabilities

Work Integration Needs
Analysis of the School-
to-work Transition for
Young Adults with
Disabilities in Ontario

L'utilisation des TIC pour
soutenir l'accès à l'emploi des
adolescents handicapés ou en
difficultés d'apprentissage
ou d'adaptation (HDAA)

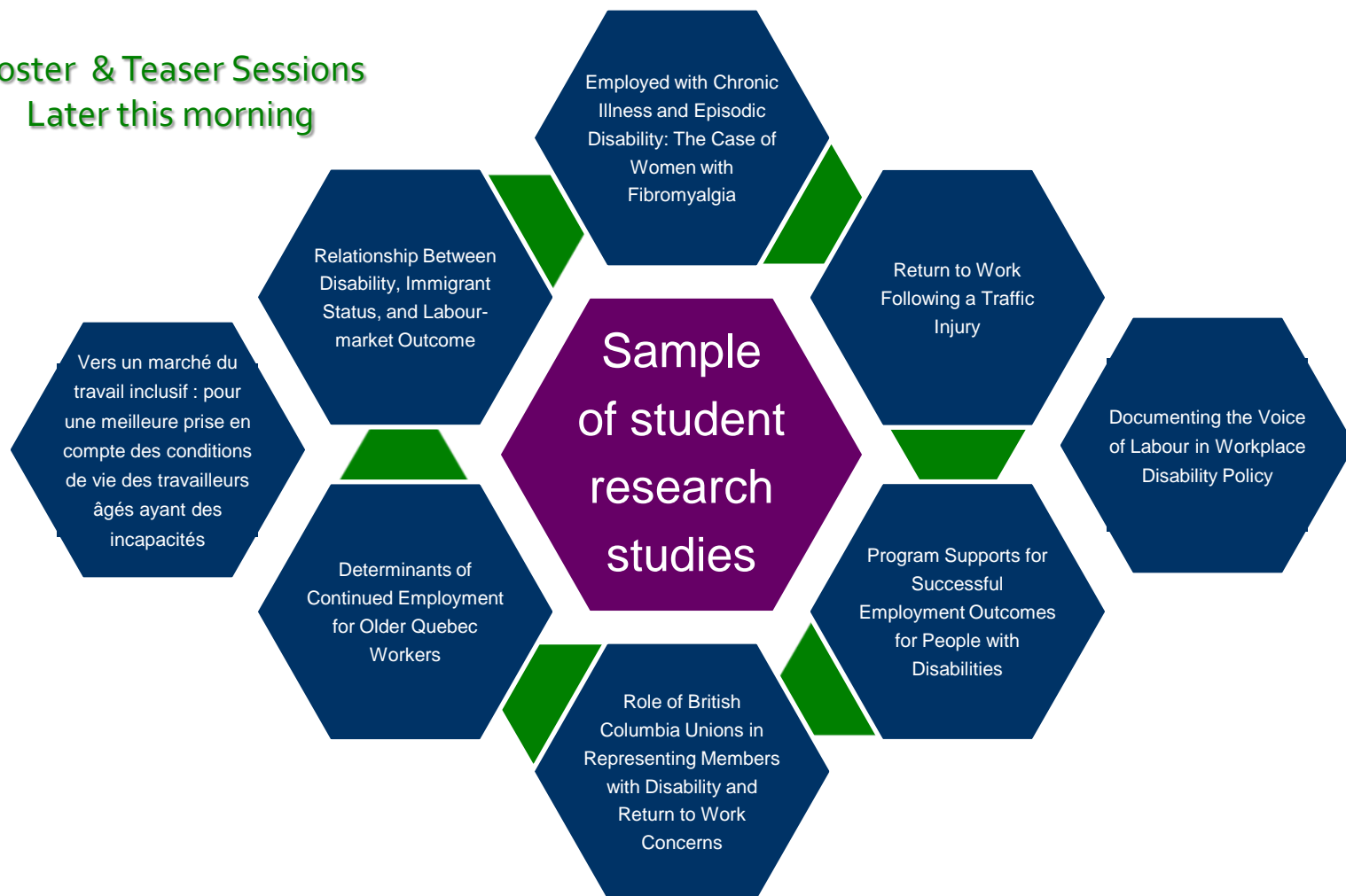
Investigating Vocational
Rehabilitation Outcomes
Among Permanently
Injured Workers





Student Research

Poster & Teaser Sessions
Later this morning





Centre de recherche sur les politiques en matière d'invalidité professionnelle (CRPIP)
Centre for Research on Work Disability Policy (CRWDP)

Student/New Researcher Training Opportunities

- Support training and mentoring opportunities for students and new scholars
 - 70 Graduate stipends over 7 years
 - 8 Post-doctoral fellowship years of funding
 - Research associates on projects
 - Community/Policy internships
 - CRWDP new research activities at conferences





Centre de recherche sur les politiques en matière d'invalidité professionnelle (CRPIP)
Centre for Research on Work Disability Policy (CRWDP)

Knowledge Mobilization Activities

Employer Round Tables: Forum to help move employer from challenges to best practices

Labour Round Tables: Discussion with unions and labour representatives on current work disability policy issues

Policy Round Tables: Discussions with policymakers about a roadmap for policy change

Speakers Series and Webinars: Forum for presenting new research and discussing policy implications

National Symposia: Events bringing academics and partners together to discuss new research, knowledge gaps and research priorities





CRWDP Champions

Respected figure heads widely known to the public



Mike Bradley



David Onley



Mark Wafer

1. **Mike Bradley**, Mayor of Sarnia
 - Originator of the *"Mayor's Challenge to Hire Persons with a Disability"*
 - Pioneering a local program that rates and recognizes accessible businesses
2. **The Honourable David C. Onley**, Lieutenant Governor of Ontario
 - Adopted 'accessibility' as the overarching theme of his mandate
3. **Mark Wafer**, Tim Horton's Franchise Owner
 - Nationally known as model employer for active recruitment of people with disabilities



Centre de recherche sur les politiques en matière d'invalidité professionnelle (CRPIP)
Centre for Research on Work Disability Policy (CRWDP)

Community Capacity Building



Steve Mantis
Ontario Network of Injured
Workers Group

- Spearheaded by Steve Mantis, longstanding injured workers advocate
- **Community Caucuses** – umbrella structure for coming together to create common ground
- **Community Forums** – meetings for two-way dissemination of knowledge
- **Speakers School** – training program to develop speaking skills and confidence



Worker Videos Stories

- Injured and disabled workers sharing their experiences of Canada's work disability policy system
- Available on CRWDP website and YouTube channel:
www.youtube.com/crwdp
- Developing videos of worker-employer experiences with employment

Ali's Story



Mallory's Story



Brian's Story



Lynn's Story



Eugene's Story



Mario's Story



Robert's Story





Centre de recherche sur les politiques en matière d'invalidité professionnelle (CRPIP)
Centre for Research on Work Disability Policy (CRWDP)

Social and Print Media

- Accessible, bilingual website with archive of resources
- Accessible newsletter developed with Adobe InDesign
- Annual Activity Report
- Twitter launched Feb 2014 @crwdp

More than 12,000 website visits to second issue of English-language newsletter






Centre de recherche sur les politiques en matière d'invalidité professionnelle (CRPIP)
Centre for Research on Work Disability Policy (CRWDP)

Our Website



www.crwdp.ca

Centre de
recherche sur les politiques en
matière d'invalidité professionnelle




Centre for
Research on
Work Disability Policy

Search



Français

Home About Research Participants Partners News



Improving Canadian work disability policy
to help all people access employment

Events and activities that bring stakeholders together

Who
We Are

+

The Centre for Research on Work Disability
Policy (CRWDP) is a transdisciplinary initiative
on the future of work disability policy in
Canada

Research
Highlights

+

L'accompagnement vers
l'emploi dans les carrefours
jeunesse-emploi; la
politique d'insertion à
l'épreuve du terrain

Handbook of Work
Disability Policy

News
& Events


+

May 20 to Jul 15 - Call for
Seed Grant Proposals

Feb 4 - News release: New
research centre to help
injured, ill and disabled
workers stay in job market


Partner
Spotlight

+

Centre for
Independent Living
Toronto

Participant
Spotlight

+

Aleck Ostry



Centre de recherche sur les politiques en matière d'invalidité professionnelle (CRPIP)
Centre for Research on Work Disability Policy (CRWDP)

Our National Launch

Opening the Centre with a splash



CRWDP Launch: From left, Dr. Patrick Deane, President and Vice-Chancellor of McMaster University; Dr. Ellen MacEachen, Co-director of CRWDP; Dr. Charlotte Yates, Dean, Faculty of Social Sciences, McMaster University; Mrs. Ruth Ann Onley; The Hon. David C. Onley, Lieutenant Governor of Ontario; Dr. Emile Tompa, Co-director of CRWDP; Dr. Brent Herbert-Copley, Vice-President, Research Capacity, Social Science and Humanities Research Council.

- February 4, 2014
- The Honourable David C. Onley gave opening keynote
- Mayor Mike Bradley gave the closing keynote
- Concurrently had media release with uptake by 30+ outlets
- Released the 1st newsletter, launched website, and published 5 worker videos



Centre de recherche sur les politiques en matière d'invalidité professionnelle (CRPIP) Centre for Research on Work Disability Policy (CRWDP)

Our Partners

- Community groups
- Legal clinics
- Labour/unions
- Policy makers
- Disability program representatives
- Employer organizations
- Research institutions





Target Outcomes

Intermediate outcome via research:

Extensive knowledge base for evidence-informed policy decision-making

Intermediate outcome via partner engagement:

Network of stakeholders and mobilised work disability community

Ultimate outcomes:

Improved Canadian work disability policy system
Establishment of an applied work disability policy field of study

Intermediate outcome via training and mentoring:

Increased research capacity and work disability policy expertise

Intermediate outcome via knowledge mobilization:

Improved societal awareness of need for inclusiveness and engagement



Centre de recherche sur les politiques en matière d'invalidité professionnelle (CRPIP)
Centre for Research on Work Disability Policy (CRWDP)

Thank You



crwdp@iwh.on.ca